

ELYSEE

MIAMI

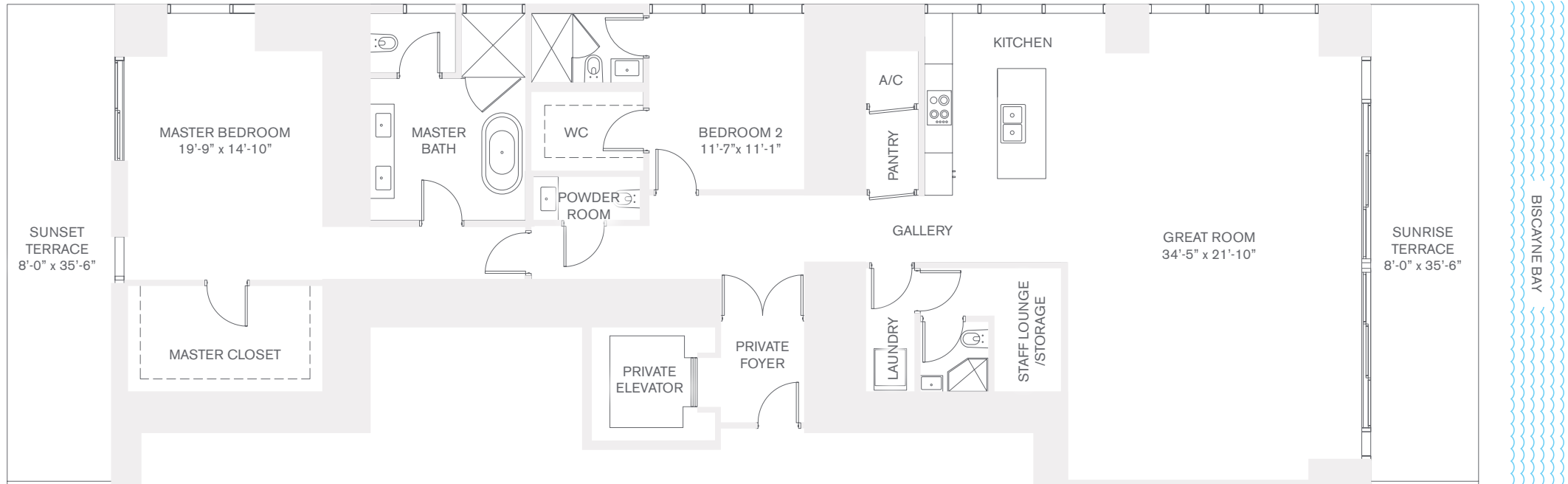
RESIDENCE  
**A**

# FLOORS 8-29

NORTH RESIDENCE

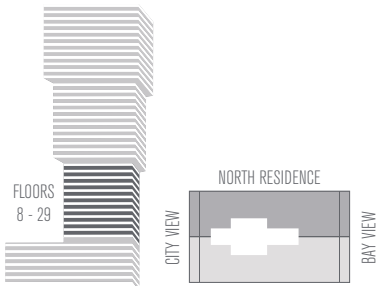
2 BEDROOM / 3.5 BATH

ALTERNATE  
WEST MASTER  
FLOOR PLAN



GREAT ROOM | SUNRISE & SUNSET TERRACES | PRIVATE ELEVATOR & FOYER

UNDER A/C:	2,727 SQ FT	253 M <sup>2</sup>
TERRACE:	568 SQ FT	53 M <sup>2</sup>
<b>TOTAL:</b>	<b>3,295 SQ FT</b>	<b>306 M<sup>2</sup></b>



ORAL REPRESENTATIONS CANNOT BE RELIED UPON AS CORRECTLY STATING THE REPRESENTATIONS OF THE DEVELOPER. FOR CORRECT REPRESENTATIONS, MAKE REFERENCE TO THIS BROCHURE AND TO THE DOCUMENTS REQUIRED BY SECTION 718.503, FLORIDA STATUTES, TO BE FURNISHED BY A DEVELOPER TO A BUYER OR LESSEE. Stated square footages and dimensions are measured to the exterior boundaries of the exterior walls and the centerline of interior demising walls between Units and in fact vary from the dimensions that would be determined by using the description and definition of the "Unit" set forth in the Declaration, which generally only includes the interior airspace between the perimeter walls and excludes all interior structural components and other common elements. The method used herein is generally found in sales materials and is provided to allow a prospective buyer to compare the Units with units in other condominium projects that utilize the same method. For the dimensions of the Units based on the definition of "Unit" in the Declaration, refer to Exhibit "2" to the Declaration of Condominium included in the prospectus. Terraces and Private Elevators are not part of the Unit. Measurements of rooms set forth on this floor plan are generally taken at the farthest points of each given room (as described above and as if the room were a perfect rectangle), without regard for any cutouts or variations. Accordingly, the interior air space dimensions of the actual room will be smaller than the product obtained by multiplying the stated length and width. All square footages and dimensions are estimates based on preliminary plans and will vary with actual construction. All floor plans, specifications, and other development plans are proposed and conceptual only, are subject to change, and will not necessarily accurately reflect the final plans and specifications for the development.

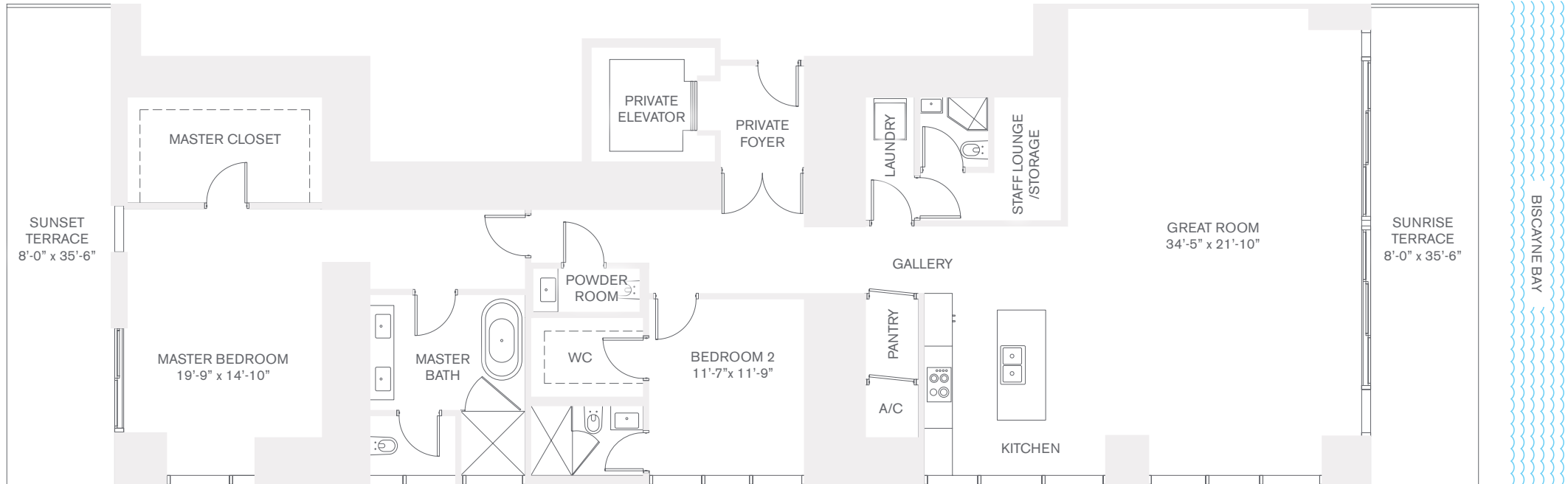
RESIDENCE  
**B**

# FLOORS 8-29

SOUTH RESIDENCE

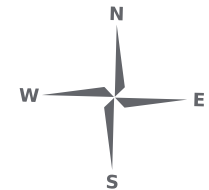
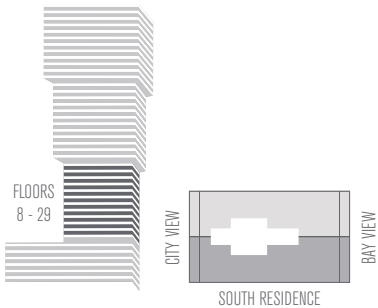
ALTERNATE  
WEST MASTER  
FLOOR PLAN

2 BEDROOM / 3.5 BATH



GREAT ROOM | SUNRISE & SUNSET TERRACES | PRIVATE ELEVATOR & FOYER

UNDER A/C:	2,727 SQ FT	253 M <sup>2</sup>
TERRACE:	568 SQ FT	53 M <sup>2</sup>
<b>TOTAL:</b>	<b>3,295 SQ FT</b>	<b>306 M<sup>2</sup></b>



ORAL REPRESENTATIONS CANNOT BE RELIED UPON AS CORRECTLY STATING THE REPRESENTATIONS OF THE DEVELOPER. FOR CORRECT REPRESENTATIONS, MAKE REFERENCE TO THIS BROCHURE AND TO THE DOCUMENTS REQUIRED BY SECTION 718.503, FLORIDA STATUTES, TO BE FURNISHED BY A DEVELOPER TO A BUYER OR LESSEE. Stated square footages and dimensions are measured to the exterior boundaries of the exterior walls and the centerline of interior demising walls between Units and in fact vary from the dimensions that would be determined by using the description and definition of the "Unit" set forth in the Declaration, which generally only includes the interior airspace between the perimeter walls and excludes all interior structural components and other common elements. The method used herein is generally found in sales materials and is provided to allow a prospective buyer to compare the Units with units in other condominium projects that utilize the same method. For the dimensions of the Units based on the definition of "Unit" in the Declaration, refer to Exhibit "2" to the Declaration of Condominium included in the prospectus. Terraces and Private Elevators are not part of the Unit. Measurements of rooms set forth on this floor plan are generally taken at the farthest points of each given room (as described above and as if the room were a perfect rectangle), without regard for any cutouts or variations. Accordingly, the interior air space dimensions of the actual room will be smaller than the product obtained by multiplying the stated length and width. All square footages and dimensions are estimates based on preliminary plans and will vary with actual construction. All floor plans, specifications, and other development plans are proposed and conceptual only, are subject to change, and will not necessarily accurately reflect the final plans and specifications for the development.

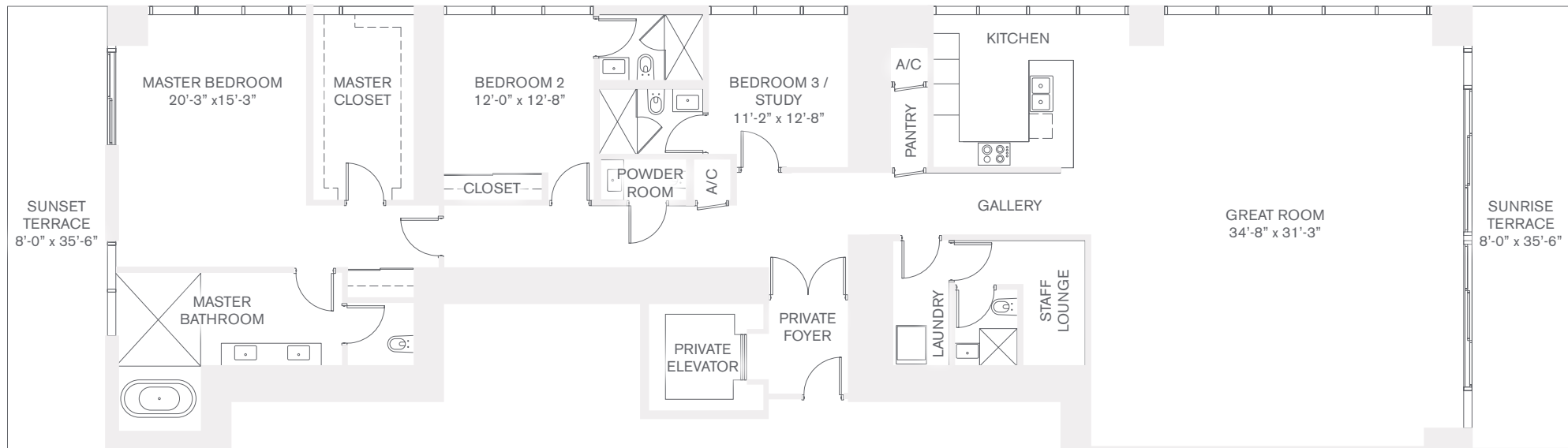
RESIDENCE  
**C**

# FLOORS 31-45

NORTH RESIDENCE

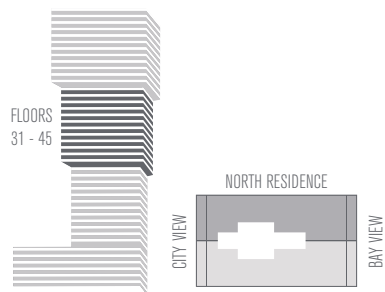
ALTERNATE  
WEST MASTER  
FLOOR PLAN

3 BEDROOM / 4.5 BATH



GREAT ROOM | STUDY | STAFF LOUNGE | SUNRISE & SUNSET TERRACES | PRIVATE ELEVATOR & FOYER

UNDER A/C:	3,319 SQ FT	308 M <sup>2</sup>
TERRACE:	568 SQ FT	53 M <sup>2</sup>
<b>TOTAL:</b>	<b>3,887 SQ FT</b>	<b>361 M<sup>2</sup></b>



ORAL REPRESENTATIONS CANNOT BE RELIED UPON AS CORRECTLY STATING THE REPRESENTATIONS OF THE DEVELOPER. FOR CORRECT REPRESENTATIONS, MAKE REFERENCE TO THIS BROCHURE AND TO THE DOCUMENTS REQUIRED BY SECTION 718.503, FLORIDA STATUTES, TO BE FURNISHED BY A DEVELOPER TO A BUYER OR LESSEE. Stated square footages and dimensions are measured to the exterior boundaries of the exterior walls and the centerline of interior demising walls between Units and in fact vary from the dimensions that would be determined by using the description and definition of the "Unit" set forth in the Declaration, which generally only includes the interior airspace between the perimeter walls and excludes all interior structural components and other common elements. The method used herein is generally found in sales materials and is provided to allow a prospective buyer to compare the Units with units in other condominium projects that utilize the same method. For the dimensions of the Units based on the definition of "Unit" in the Declaration, refer to Exhibit "2" to the Declaration of Condominium included in the prospectus. Terraces and Private Elevators are not part of the Unit. Measurements of rooms set forth on this floor plan are generally taken at the farthest points of each given room (as described above and as if the room were a perfect rectangle), without regard for any cutouts or variations. Accordingly, the interior air space dimensions of the actual room will be smaller than the product obtained by multiplying the stated length and width. All square footages and dimensions are estimates based on preliminary plans and will vary with actual construction. All floor plans, specifications, and other development plans are proposed and conceptual only, are subject to change, and will not necessarily accurately reflect the final plans and specifications for the development.

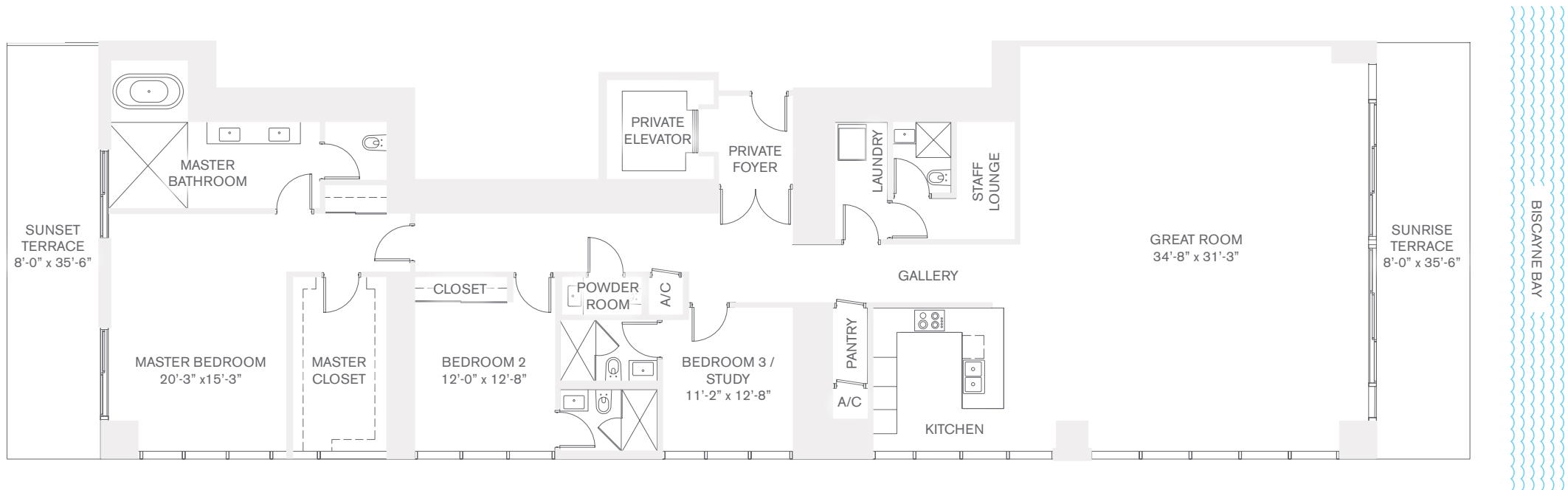
RESIDENCE  
**D**

# FLOORS 31-45

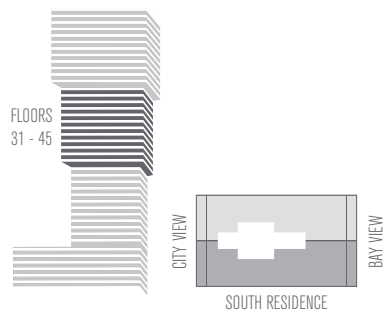
SOUTH RESIDENCE

ALTERNATE  
WEST MASTER  
FLOOR PLAN

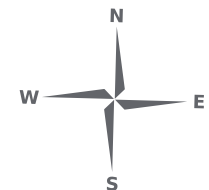
3 BEDROOM / 4.5 BATH



GREAT ROOM | STUDY | STAFF LOUNGE | SUNRISE & SUNSET TERRACES | PRIVATE ELEVATOR & FOYER



UNDER A/C:	3,300 SQ FT	307 M <sup>2</sup>
TERRACE:	568 SQ FT	53 M <sup>2</sup>
<b>TOTAL:</b>	<b>3,868 SQ FT</b>	<b>360 M<sup>2</sup></b>



ORAL REPRESENTATIONS CANNOT BE RELIED UPON AS CORRECTLY STATING THE REPRESENTATIONS OF THE DEVELOPER. FOR CORRECT REPRESENTATIONS, MAKE REFERENCE TO THIS BROCHURE AND TO THE DOCUMENTS REQUIRED BY SECTION 718.503, FLORIDA STATUTES, TO BE FURNISHED BY A DEVELOPER TO A BUYER OR LESSEE. Stated square footages and dimensions are measured to the exterior boundaries of the exterior walls and the centerline of interior demising walls between Units and in fact vary from the dimensions that would be determined by using the description and definition of the "Unit" set forth in the Declaration, which generally only includes the interior airspace between the perimeter walls and excludes all interior structural components and other common elements. The method used herein is generally found in sales materials and is provided to allow a prospective buyer to compare the Units with units in other condominium projects that utilize the same method. For the dimensions of the Units based on the definition of "Unit" in the Declaration, refer to Exhibit "2" to the Declaration of Condominium included in the prospectus. Terraces and Private Elevators are not part of the Unit. Measurements of rooms set forth on this floor plan are generally taken at the farthest points of each given room (as described above and as if the room were a perfect rectangle), without regard for any cutouts or variations. Accordingly, the interior air space dimensions of the actual room will be smaller than the product obtained by multiplying the stated length and width. All square footages and dimensions are estimates based on preliminary plans and will vary with actual construction. All floor plans, specifications, and other development plans are proposed and conceptual only, are subject to change, and will not necessarily accurately reflect the final plans and specifications for the development.

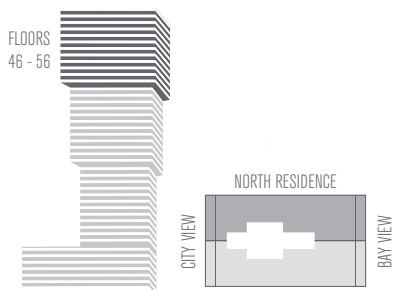
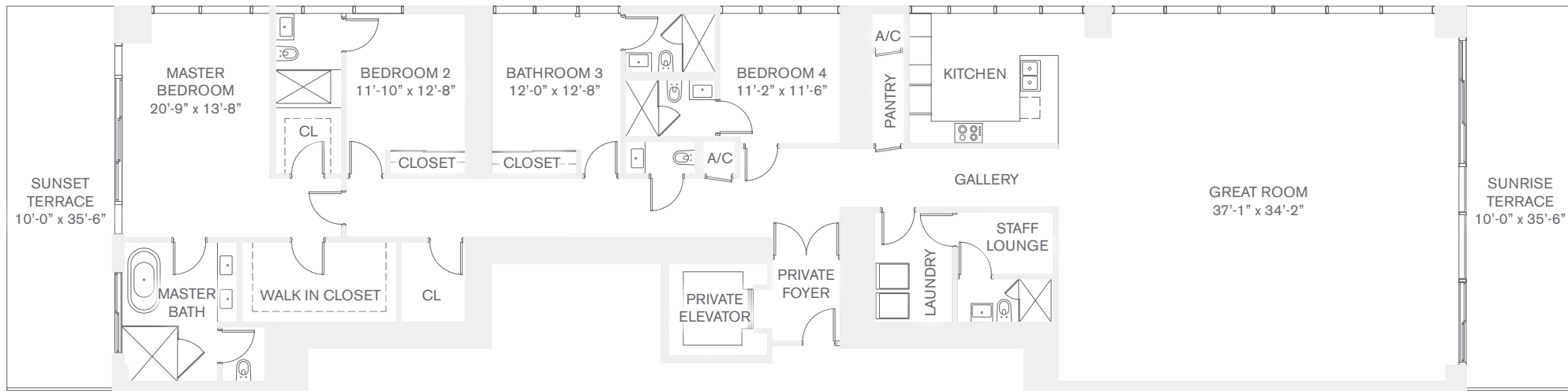
RESIDENCE  
**E**

# FLOORS 46-56

NORTH RESIDENCE

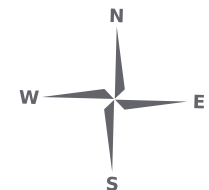
ALTERNATE  
WEST MASTER  
FLOOR PLAN

4 BEDROOM / 5.5 BATH



GREAT ROOM | STAFF LOUNGE | SUNRISE & SUNSET TERRACES | PRIVATE ELEVATOR & FOYER

UNDER A/C:	3,891 SQ FT	361 M <sup>2</sup>
TERRACE:	710 SQ FT	66 M <sup>2</sup>
<b>TOTAL:</b>	<b>4,601 SQ FT</b>	<b>427 M<sup>2</sup></b>



ORAL REPRESENTATIONS CANNOT BE RELIED UPON AS CORRECTLY STATING THE REPRESENTATIONS OF THE DEVELOPER. FOR CORRECT REPRESENTATIONS, MAKE REFERENCE TO THIS BROCHURE AND TO THE DOCUMENTS REQUIRED BY SECTION 718.503, FLORIDA STATUTES, TO BE FURNISHED BY A DEVELOPER TO A BUYER OR LESSEE. Stated square footages and dimensions are measured to the exterior boundaries of the exterior walls and the centerline of interior demising walls between Units and in fact vary from the dimensions that would be determined by using the description and definition of the "Unit" set forth in the Declaration, which generally only includes the interior airspace between the perimeter walls and excludes all interior structural components and other common elements. The method used herein is generally found in sales materials and is provided to allow a prospective buyer to compare the Units with units in other condominium projects that utilize the same method. For the dimensions of the Units based on the definition of "Unit" in the Declaration, refer to Exhibit "2" to the Declaration of Condominium included in the prospectus. Terraces and Private Elevators are not part of the Unit. Measurements of rooms set forth on this floor plan are generally taken at the farthest points of each given room (as described above and as if the room were a perfect rectangle), without regard for any cutouts or variations. Accordingly, the interior air space dimensions of the actual room will be smaller than the product obtained by multiplying the stated length and width. All square footages and dimensions are estimates based on preliminary plans and will vary with actual construction. All floor plans, specifications, and other development plans are proposed and conceptual only, are subject to change, and will not necessarily accurately reflect the final plans and specifications for the development.

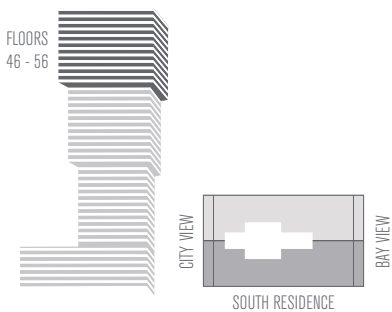
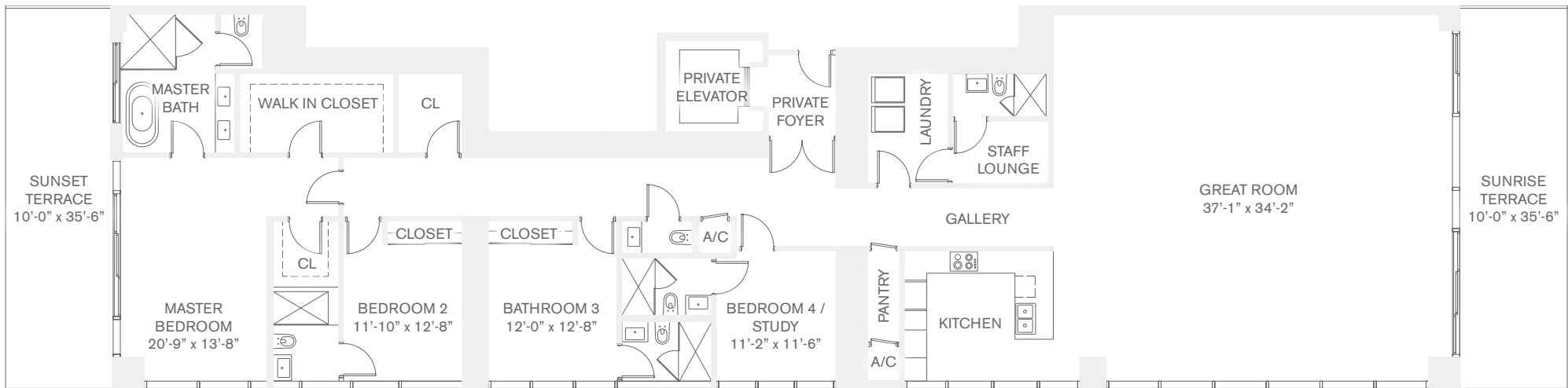
RESIDENCE  
**F**

# FLOORS 46-56

SOUTH RESIDENCE

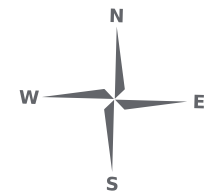
ALTERNATE  
WEST MASTER  
FLOOR PLAN

4 BEDROOM / 5.5 BATH



GREAT ROOM | STUDY | STAFF LOUNGE | SUNRISE & SUNSET TERRACES | PRIVATE ELEVATOR & FOYER

UNDER A/C:	3,891 SQ FT	361 M <sup>2</sup>
TERRACE:	710 SQ FT	66 M <sup>2</sup>
<b>TOTAL:</b>	<b>4,601 SQ FT</b>	<b>427 M<sup>2</sup></b>



ORAL REPRESENTATIONS CANNOT BE RELIED UPON AS CORRECTLY STATING THE REPRESENTATIONS OF THE DEVELOPER. FOR CORRECT REPRESENTATIONS, MAKE REFERENCE TO THIS BROCHURE AND TO THE DOCUMENTS REQUIRED BY SECTION 718.503, FLORIDA STATUTES, TO BE FURNISHED BY A DEVELOPER TO A BUYER OR LESSEE. Stated square footages and dimensions are measured to the exterior boundaries of the exterior walls and the centerline of interior demising walls between Units and in fact vary from the dimensions that would be determined by using the description and definition of the "Unit" set forth in the Declaration, which generally only includes the interior airspace between the perimeter walls and excludes all interior structural components and other common elements. The method used herein is generally found in sales materials and is provided to allow a prospective buyer to compare the Units with units in other condominium projects that utilize the same method. For the dimensions of the Units based on the definition of "Unit" in the Declaration, refer to Exhibit "2" to the Declaration of Condominium included in the prospectus. Terraces and Private Elevators are not part of the Unit. Measurements of rooms set forth on this floor plan are generally taken at the farthest points of each given room (as described above and as if the room were a perfect rectangle), without regard for any cutouts or variations. Accordingly, the interior air space dimensions of the actual room will be smaller than the product obtained by multiplying the stated length and width. All square footages and dimensions are estimates based on preliminary plans and will vary with actual construction. All floor plans, specifications, and other development plans are proposed and conceptual only, are subject to change, and will not necessarily accurately reflect the final plans and specifications for the development.